

NOTED THE DESIGN OF MATERIAL, CONFORM PROPERLY APPROVED OF APPROX & LOCAL IS SUBMITTED IN CONFIDENCE OF COMPANY THAT IT WILL NOT BE COPIED OR OTHERWISE REPRODUCED, WILL BE USED ONLY FOR YOUR INFORMATION AND WILL NOT BE USED OR REPRODUCED TO ANYONE EXCEPT AS AUTHORIZED BY WRG WITH CONSENT OF ISSUING & USER.

CE TRANSFORMERS & CIRCUIT BREAKERS

ZONE	REV	DESCRIPTION	DATE	APPROVED
J1		ALL SHEETS UPDATED AND REVISED FOR CE.	10/27/90	
K		TRANSFORMER DETAILS UPDATED.	10/29/90	
L		TRANSFORMER TAPES ADDED.	03/29/91	
M		VHT OPTION ADDED.	06/12/91	
R		ECD-152L REVISED SHEET 4.	6/3/92	GLW
T		ECD-153R REVISED SHEET 3.	7/3/92	GLW

NOTES

1] SENSOR TABLE

SENSOR	1040	1060		
		A	B	C] 5VDC
SLIDE EXTENDED	70	J12-1	J12-2	J12-3
SLIDE HOME	72	J12-4	J12-5	J12-6
TURRET MOTION	74	J12-7	J12-8	J12-9
BRAKING DOWN	50	J9-1	J9-2	J9-3
HIGH RANGE	54	J9-10	J9-11	J9-12
LOW RANGE	58	J11-4	J11-5	J11-6

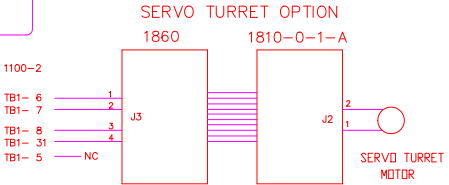
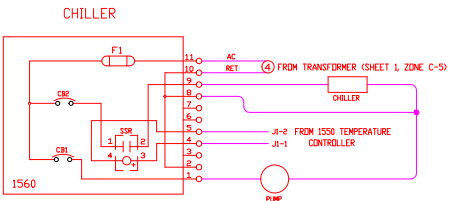
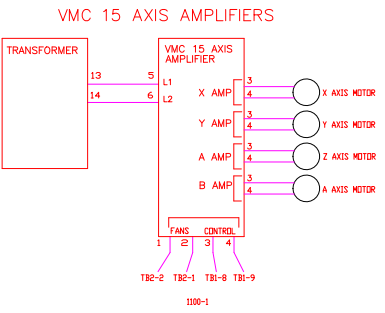
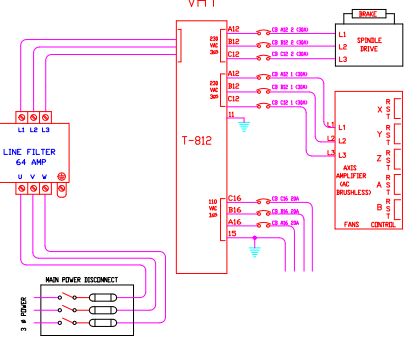
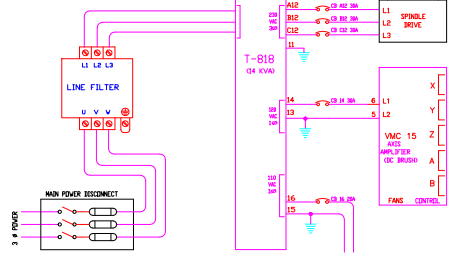
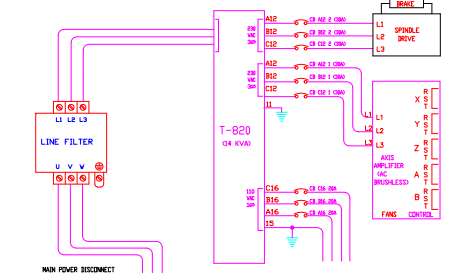
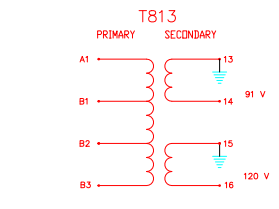
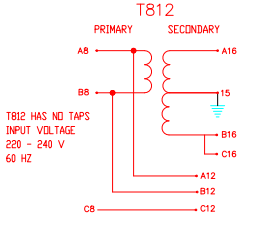
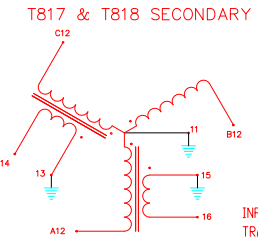
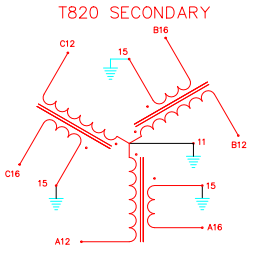
2] TYPICAL OF EACH AXIS (FOR D.C. MOTORS ONLY)

	A	B	C
X AXIS	1010 CX	1060 J1	X AXIS AMP
Y AXIS	1010 CY	1060 J2	Y AXIS AMP
Z AXIS	1010 CZ	1060 J3	Z AXIS AMP
A AXIS	1010 CA	1060 J5	A AXIS AMP
B AXIS	1010 CB	1060 J4	B AXIS AMP

BOARD DESCRIPTION

BOARD #	LOCATION	FUNCTION
1010 CX	SLOT 9	X AXIS CONTROLLER
1010 CY	SLOT 10	Y AXIS CONTROLLER
1010 CZ	SLOT 11	Z AXIS CONTROLLER
1010 CA	SLOT 13	A AXIS CONTROLLER
1010 CB	SLOT 12	B AXIS CONTROLLER
1010 CC	SLOT 14	SPINDLE CONTROLLER
1020	SLOT 15	CLOCKS
1030	SLOT 8	COMPUTER INTERFACE
1040	SLOT 17	MILL INTERFACE
1050	SLOT 16	M FUNCTION
1060	CONTROL CAB.	BACKPLANE
1090	PENDANT	KEYBOARD
1100-1	CONTROL CAB.	POWER DISTRIBUTION
1100-2	JUNCTION BOX	POWER DISTRIBUTION
1110	PENDANT	PENDANT POWER DISTRIBUTION
1220	CONTROL CAB.	POWER SUPPLY
1400	SLOT 5	CPU
1420	SLOT 7	VIDEO
1550	SLOT 3	TEMPERATURE CONTROLLER
1560	CONTROL CAB.	CHILLER CONTROLLER
1610	SLOT 5	SOFTWARE MODULE

TRANSFORMER DIAGRAMS:



INPUT CONNECTIONS FOR MULTITAP TRANSFORMERS (EACH PHASE A, B & C)

INPUT VOLTAGE	JUMPER 3 PLS	AC INPUT
190	NONE	2
200	2-7	8
210	2-5	6
230	2-6	7
240	2-6	8
250	2-5	7
260	2-5	8
340	NONE	3
350	3-7	8
360	3-5	6
380	3-6	7
390	3-6	8
400	3-5	7
410	3-5	8
440	NONE	4
450	4-7	8
460	4-5	6
480	4-6	7
490	4-6	8
500	4-5	7
510	4-5	8

TRANSFORMER OUTPUTS

TRANSFORMER	TERMINAL	VOLTAGE
T817, T818, T820	11	GROUND FOR 240 V 3-PHASE
T817, T818, T820	A12, B12, C12	240 V 3-PHASE
T812, T820	A16, B16, C16	120 V SINGLE PHASE
T813, T817, T818	16	120 V SINGLE PHASE
ALL	15	RETURN FOR 16 (GROUNDED)
T813, T817, T818	14	120 V FOR DC AXIS AMPLIFIER CHASSIS
T813, T817, T818	13	RETURN FOR 14 (GROUNDED)

UNLESS OTHERWISE SPECIFIED DIMENSIONS ARE IN INCHES. DIMENSIONS IN PARENTHESES ARE IN MILLIMETERS. ANGLES ARE IN DEGREES. UNLESS OTHERWISE SPECIFIED, DIMENSIONS ARE TO CENTER UNLESS INDICATED OTHERWISE. THIS IS NOT SCALE DRAWING.

APPROVALS: GARY WOOSTER (DATE: 10-27-98), ENGINEER, INDRASINGH BRUAL (DATE: 10-27-98), ENGINEERING MGR.

Fadal ENGINEERING SOLUTIONS

FADAL VMC - ELECTRICAL NOTES & OPTIONS

SIZE: D PREVIOUS P/N: WRG-1002K DRG NO.: WRG-1002 REV: T

SCALE: 1/1 DATE: 10/27/98 SHEET: 2 OF 6