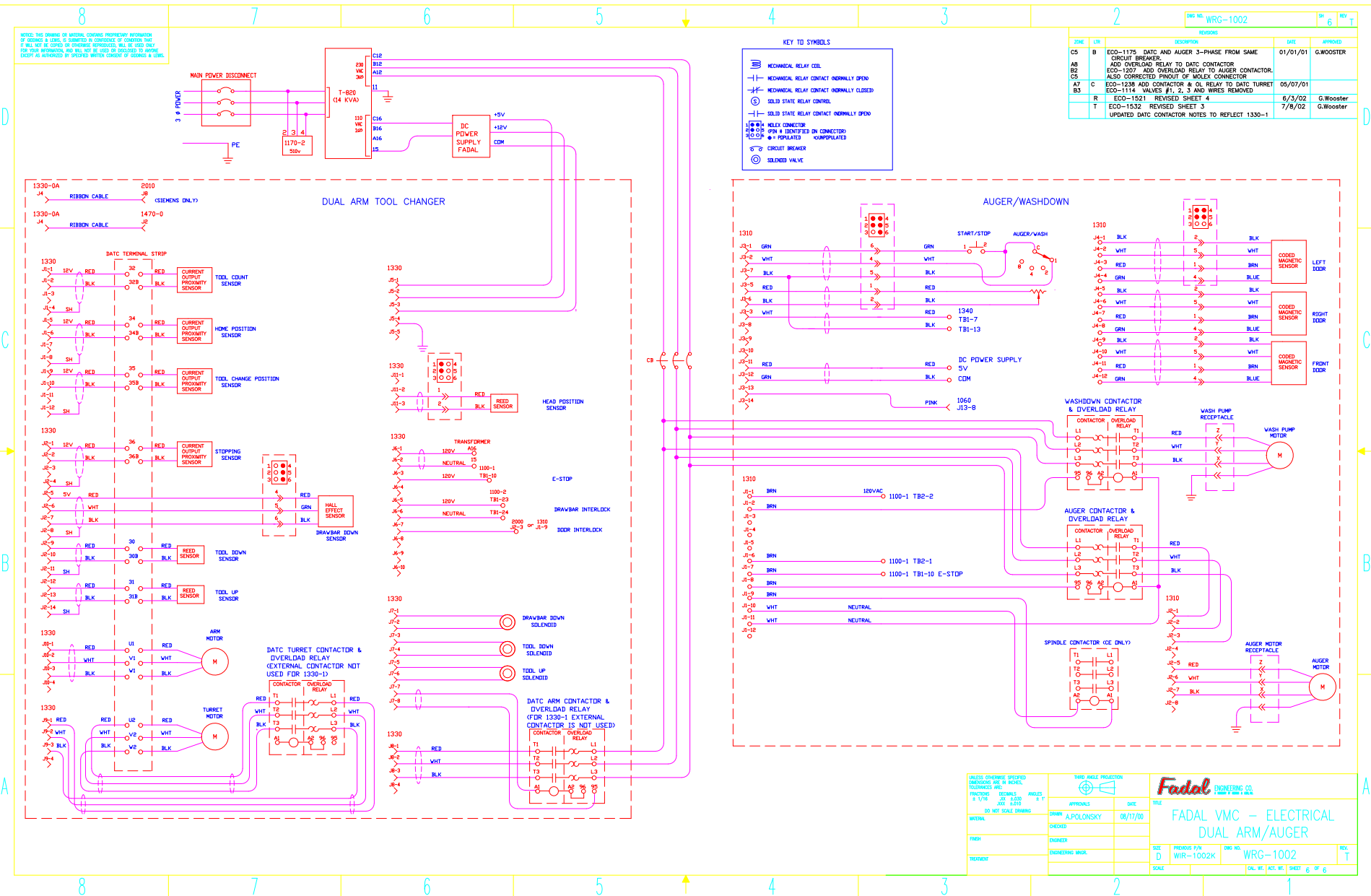


NOTED THE CHANGE OF MATERIAL, CONTACT PROXIMITY APPROXIMATION OF AUGER & LENS, IS SUBMITTED IN CONFIDENCE OF CONTACTS THAT IT WILL NOT BE COVERED BY PATENTING REFERENCES, WILL BE USED ONLY FOR YOUR INFORMATION AND WILL NOT BE USED OR REPRODUCED TO ANYONE EXCEPT AS AUTHORIZED BY WRG WITHIN COMPANY OF FADAL & LENS.

KEY TO SYMBOLS

- MECHANICAL RELAY COIL
- MECHANICAL RELAY CONTACT NORMALLY OPEN
- MECHANICAL RELAY CONTACT NORMALLY CLOSED
- SOLID STATE RELAY CONTROL
- SOLID STATE RELAY CONTACT NORMALLY OPEN
- MOLEX CONNECTOR
- SPIN # IDENTIFIED ON CONNECTOR
- ISOLATOR
- CIRCUIT BREAKER
- SOLENOID VALVE

DATE	REV	BY	APPROVED
01/01/01			G.WOOSTER
05/07/01			G.WOOSTER
6/3/02			G.WOOSTER
7/8/02			G.WOOSTER



UNLESS OTHERWISE SPECIFIED DIMENSIONS ARE IN MILLIMETERS	THIRD ANGLE PROJECTION	DATE	TITLE
1/8" = 1" UNLESS OTHERWISE SPECIFIED		08/17/00	FADAL VMC - ELECTRICAL DUAL ARM/AUGER
DATE: JUN 1 2000	APPROVALS:		
DESIGNED BY: A.POLONSKY	ENGINEER:		
CHECKED BY:	ENGINEERING MANAGER:		
DATE: JUN 1 2000			
SCALE:	PROJECT P/N: WRG-1002K	ENG NO: WRG-1002	SHEET: 6 OF 6